

# Notes

THIS DRAWING READ IN CONJUNCTION WITH :

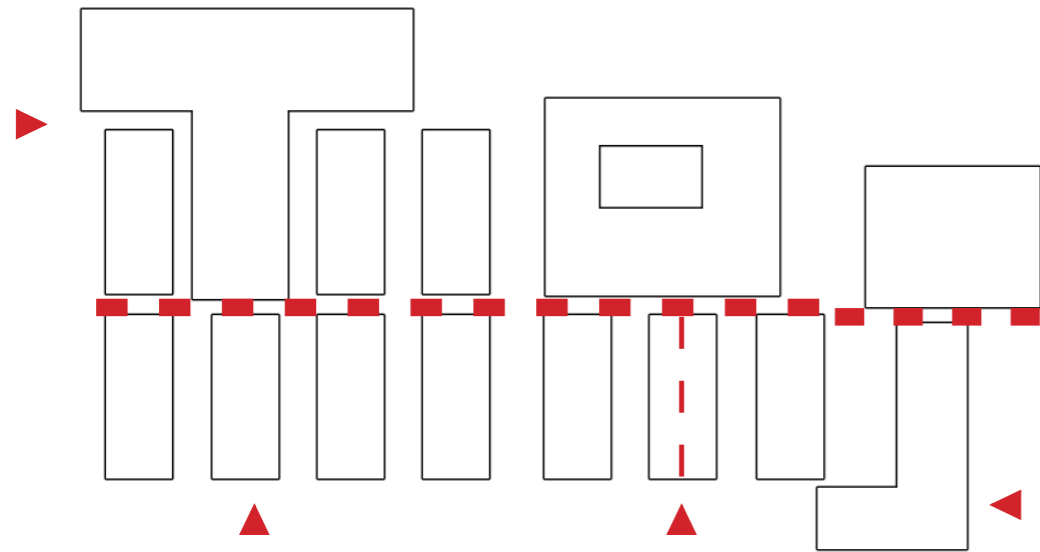


Diagram 1

- Structured circulation East-West axis
- Multiple entrances

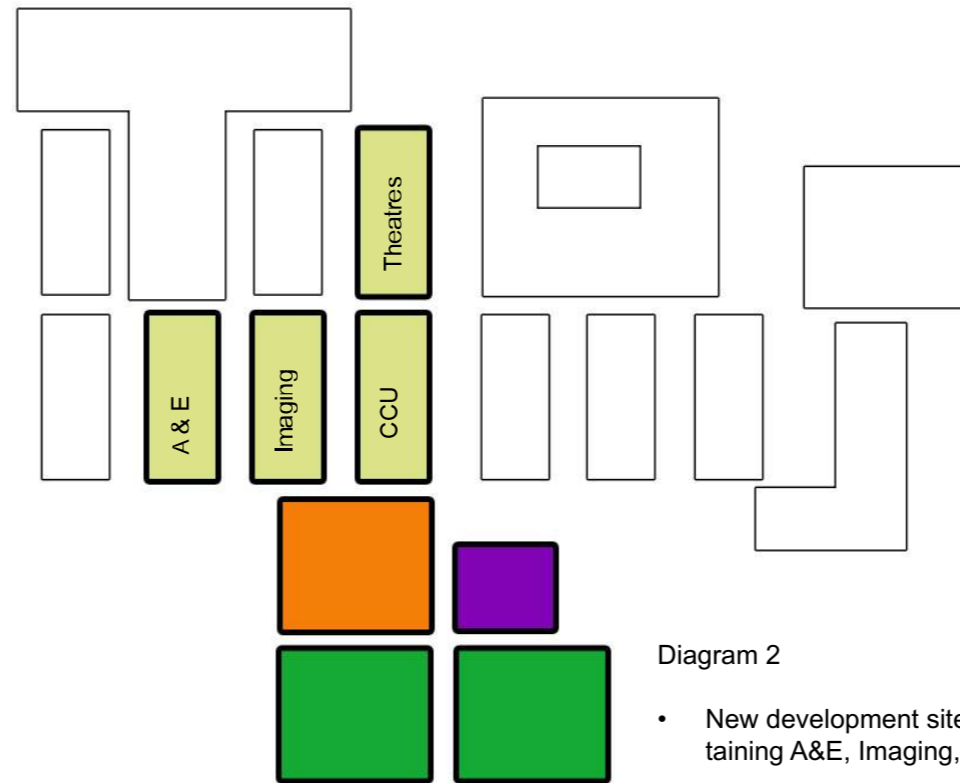


Diagram 2

- New development sited by templates containing A&E, Imaging, Theatres and CCU

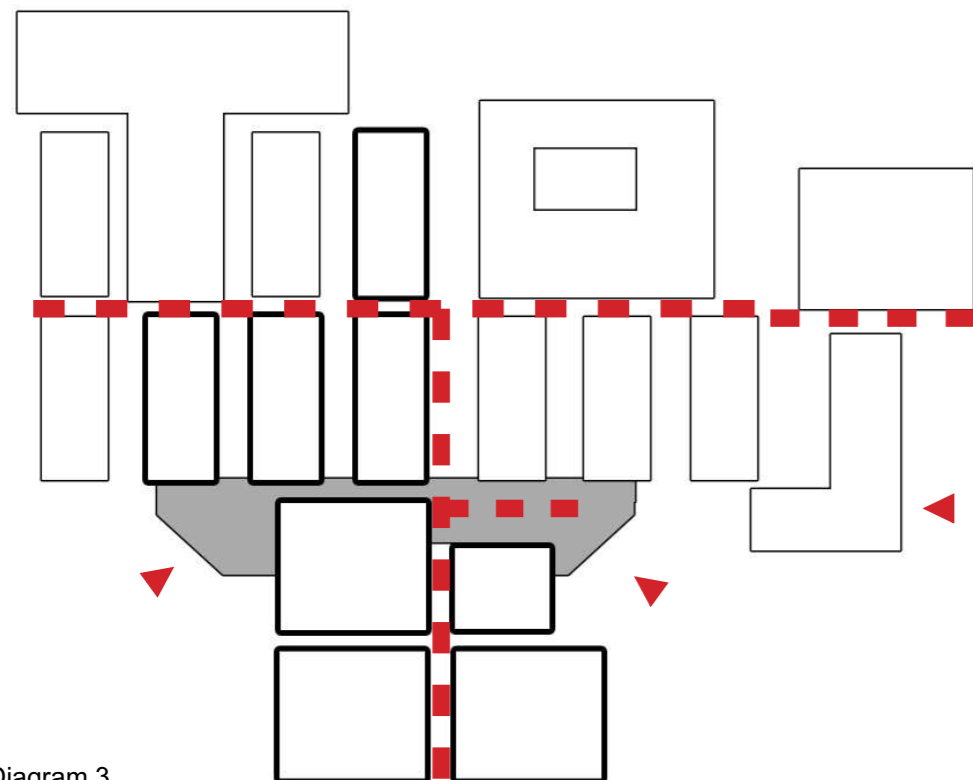


Diagram 3

- Provide rationalised main entrance / commercial opportunities.
- New North/South link to link new development to existing street.
- New entrance to link Emergency Department, UCC and Imaging

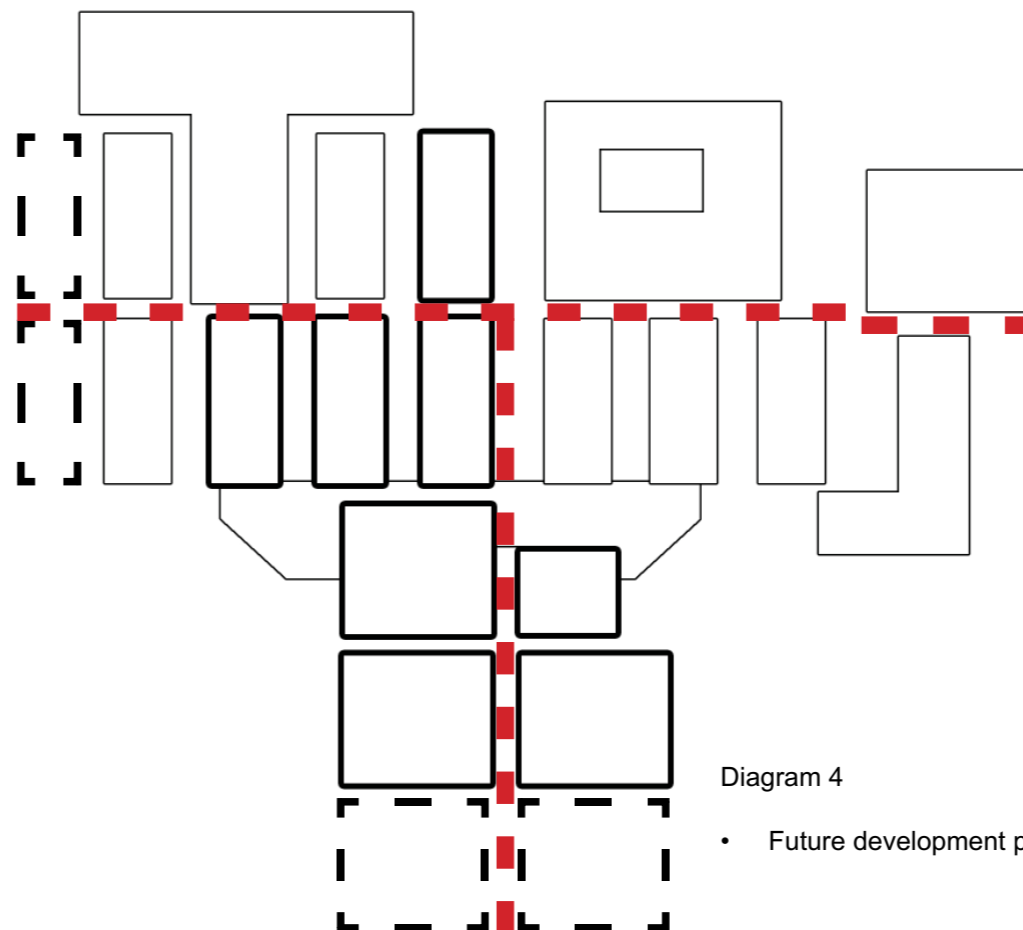


Diagram 4

- Future development possible on two axis

Rev	Description	Date	Dr by	App by
original	KS	07.03.16		AE

**AHR** Architects Ltd  
 First Floor  
 Victoria House  
 Victoria Quay  
 Shrewsbury  
 SY1 1HH  
 United Kingdom  
 T +44(0)174 3283000  
 F +44(0)174 3232717  
 E shrewsbury@ahr-global.com  
 www.ahr-global.com

client  
**Shrewsbury and Telford NHS Trust**

project  
**Sustainable Services  
 Princess Royal Hospital**

drawing  
**Proposed Potential Solution - Emergency & Acute  
 DCP Development Diagrams**

project number	scale	
2015_00839_001	NTS	@A3
drawing number	rev	issue status
PRH-AHR-00-90-101	-	SOC

This drawing is to be read in conjunction with all related drawings. All dimensions must be checked and verified on site before commencing any work or producing shop drawings. The originator should be notified immediately of any discrepancy. This drawing is copyright and remains the property of AHR.

# Notes

THIS DRAWING READ IN CONJUNCTION WITH :

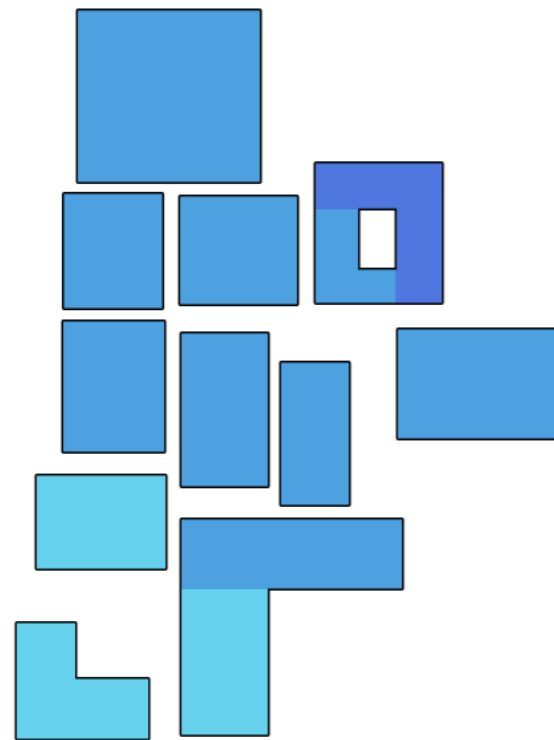


Diagram 1

- Organic cluster of departments
- No clear structure
- Ground level on 3 different levels

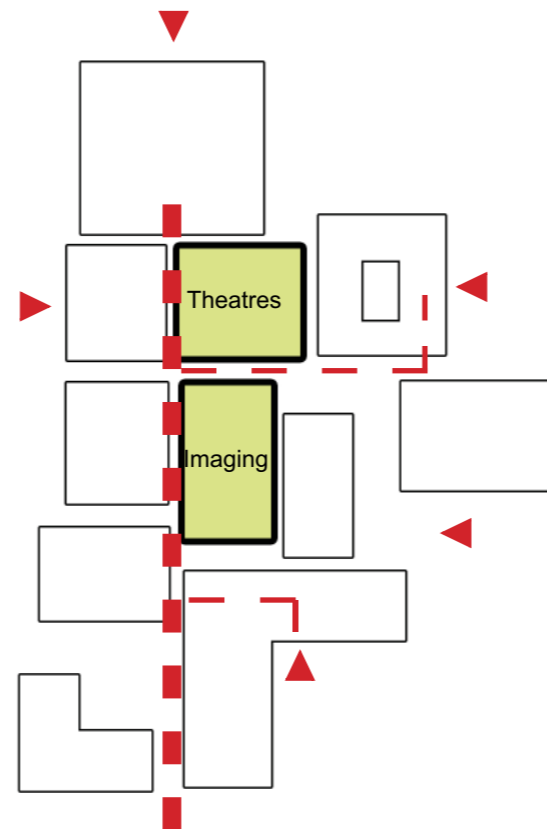


Diagram 2

- North-South street
- Multiple entrances
- No entrances on the street
- Lengthy connections between clinical areas

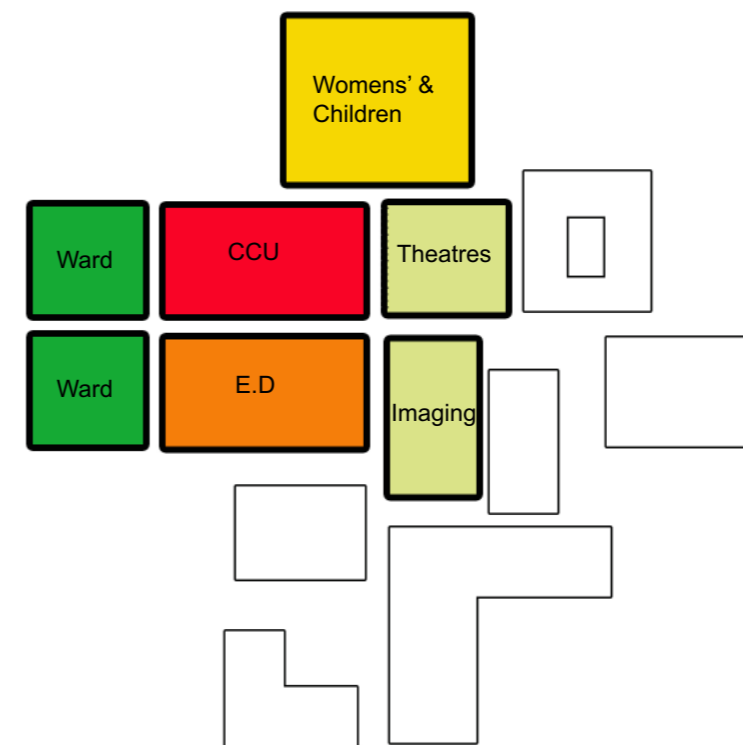


Diagram 3

- New development adjacent to theatres and imaging

Rev	Description	Date	Dr by	App by
original by		date created		approved by
KS		07.03.16		AE



AHR Architects Ltd  
 First Floor  
 Victoria House  
 Victoria Quay  
 Shrewsbury  
 SY1 1HH  
 United Kingdom  
 T +44(0)174 3283000  
 F +44(0)174 3232717  
 E shrewsbury@ahr-global.com  
 www.ahr-global.com

client  
**Shrewsbury and Telford NHS Trust**

project  
**Sustainable Services  
 Royal Shrewsbury Hospital**

drawing  
**Proposed Potential Solution - Emergency & Acute  
 DCP Development Diagrams**

project number	scale	
2015.00839.001	NTS @A3	
drawing number	rev	issue status
RSH-AHR-00-90-101	-	SOC

This drawing is to be read in conjunction with all related drawings. All dimensions must be checked and verified on site before commencing any work or producing shop drawings. The originator should be notified immediately of any discrepancy. This drawing is copyright and remains the property of AHR.

# Notes

THIS DRAWING READ IN CONJUNCTION WITH :

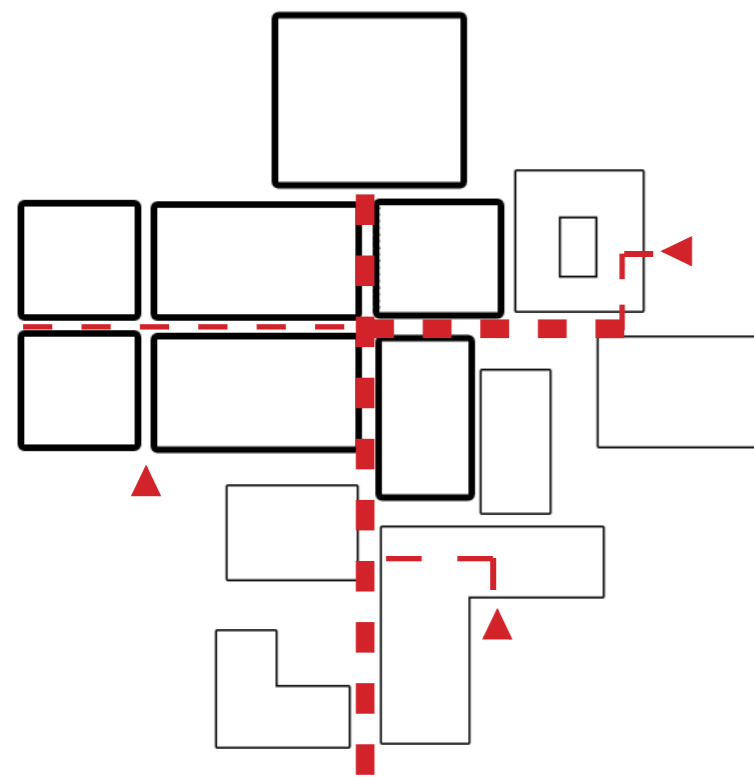


Diagram 4

- Move emergency access

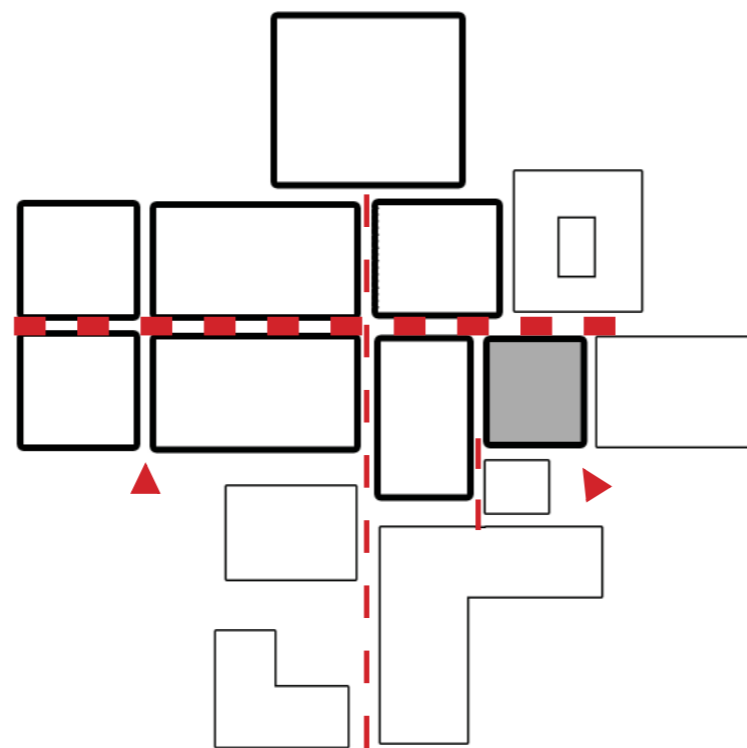


Diagram 5

- Development location prompts re-orientation of street to East-West axis.
- Introduce new main entrance onto street at more direct location.
- All major clinically hot areas linked on one level (Level 1).
- Entrances rationalised.

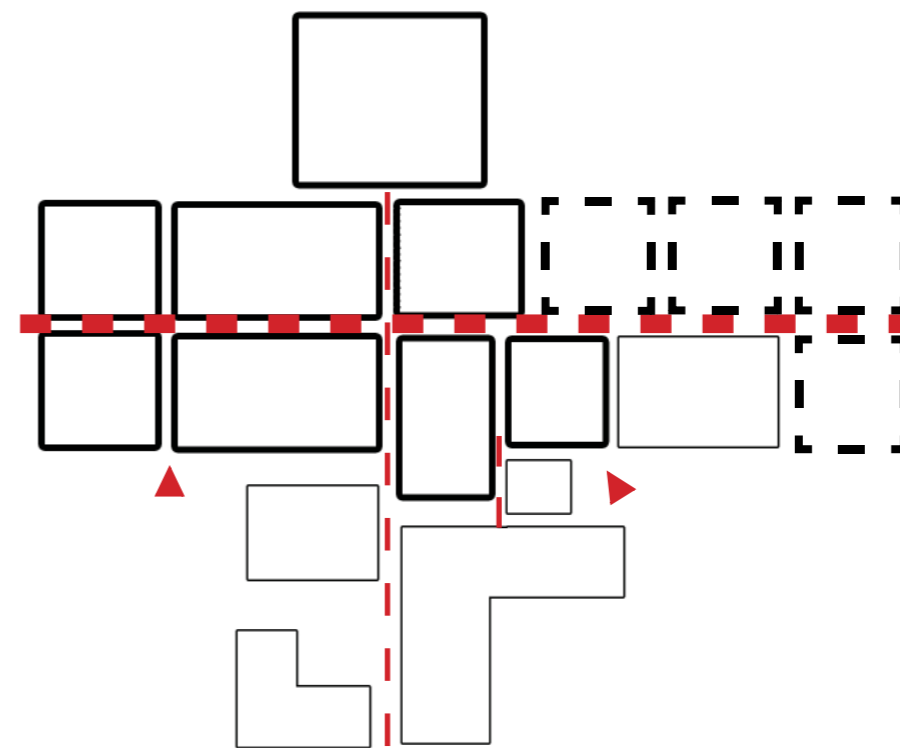


Diagram 6

- Future expansion of east-west axis

Rev	Description	Date	Dr by	App by
original by		date created		approved by
KS		07.03.16		AE

**AHR** Architects Ltd  
 First Floor  
 Victoria House  
 Victoria Quay  
 Shrewsbury  
 SY1 1HH  
 United Kingdom  
 T +44(0)174 3283000  
 F +44(0)174 3232717  
 E shrewsbury@ahr-global.com  
 www.ahr-global.com

client  
**Shrewsbury and Telford NHS Trust**

project  
**Sustainable Services  
 Royal Shrewsbury Hospital**

drawing  
**Proposed Potential Solution - Emergency & Acute  
 DCP Development Diagrams**

project number	scale	
2015.00839.001	NTS @A3	
drawing number	rev	issue status
RSH-AHR-00-90-102	-	SOC

This drawing is to be read in conjunction with all related drawings. All dimensions must be checked and verified on site before commencing any work or producing shop drawings. The originator should be notified immediately of any discrepancy. This drawing is copyright and remains the property of AHR.